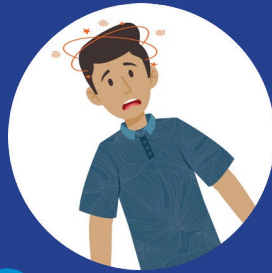


# BE FAST 中风!

中风护理从救护车中开始。  
如果有人突然出现一种或多种中风症状

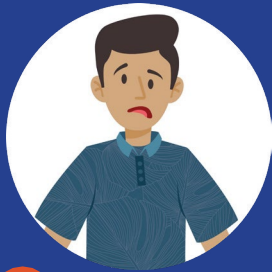
呼叫 9-1-1



**B** alance Loss  
平衡丧失



**E** yesight Problems  
视力问题



**F** ace Drooping  
面部下垂



**A** rm Weakness  
手臂无力



**S** peech Difficulty  
言语困难



**T** ime to call 9-1-1  
请立即拨打 9-1-1



欲了解更多信息, 请访问  
[BeFast.hawaii.gov](http://BeFast.hawaii.gov)