

BE FAST FOR STROKE!

Stroke care starts in the ambulance.

If someone suddenly has one or more of these stroke signs

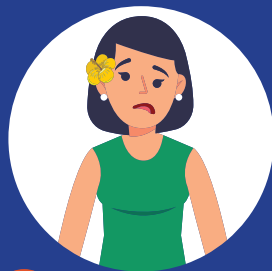
CALL 9-1-1



Balance Loss



Eyesight Problems



Face Drooping



Arm Weakness



Speech Difficulty



Time to call **9-1-1**



For more information,
visit BeFast.hawaii.gov